

North Somerset

Personal Details:

Name: Mrs Aleana Baird

Email: [REDACTED]

Postcode: [REDACTED]

Organisation Name: Aleana Baird Clerk to Yatton Parish Council (Representative of parish/town council)

Comment text:

Related subject: The whole parish

See attached response

Attached Documents:

- ypc-response-to-2nd-stage-consultation-comments-final-sept-25.pdf

Yatton Parish Council

Community Governance Review 2025:

Response to Second Consultation on Draft Recommendations

Summary of Responses

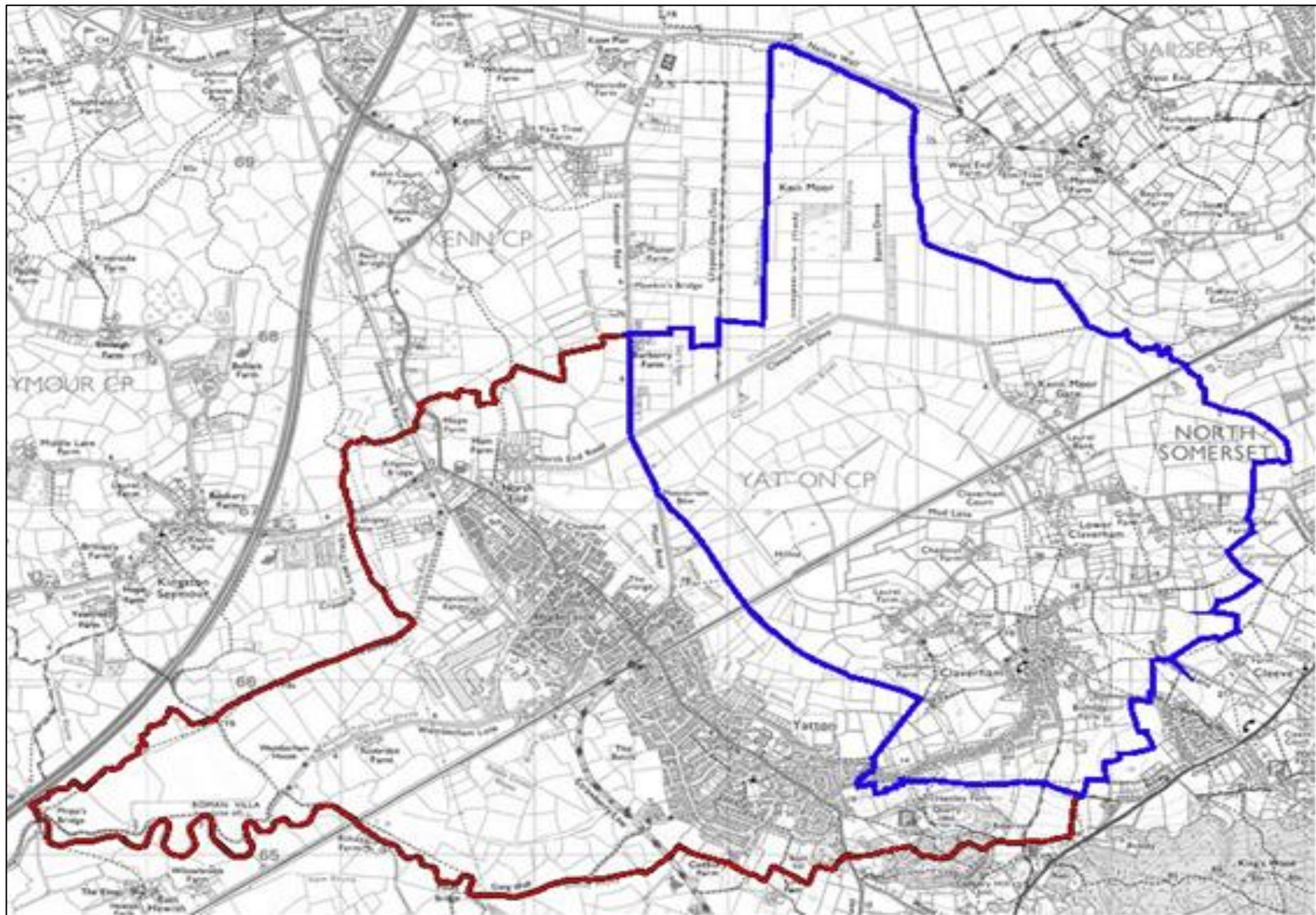
- Rename the parish of Yatton to the parish of Yatton and Claverham.
- Reduce the number of wards to two: Yatton Ward and Claverham Ward.
- Reduce the number of councillors from 18 to 16: 12 for Yatton Ward and 4 for Claverham Ward.
- Make no changes to our parish boundaries.

Responses in Detail

Submission	Draft Recommendation	Yatton Parish Council Response
From Yatton Parish Council: Change the name of the parish from Yatton to Yatton and Claverham.	Draft recommendation 8: That the Parish of Yatton be renamed Yatton and Claverham to better reflect local identity.	We hope that this recommendation is implemented, and that Yatton parish is renamed to Yatton and Claverham.
Submission 1.6 (online): Backwell, Cleeve, Clevedon, Congresbury, Kenn, Nailsea, Yatton: The number of councillors should be increased.	No draft recommendation.	We do not wish to have any increase in the number of councillors for our parish. Instead, we suggest that the number of councillors in Yatton and Claverham parish be reduced from the current 18 to 16. In terms of wards, this would be 12 for Yatton Ward and 4 for Claverham Ward.
Submission 12.1: That Yatton, Claverham, Congresbury and Cleeve remain as separate parishes.	Draft recommendation 12: That no parish mergers be made as part of this review where such changes would compromise or diminish distinct community identities.	We do not wish to merge our parish with any other parish. Note that Claverham is not a parish in its own right and nor do we wish it to be.

Submission	Draft Recommendation	Yatton Parish Council Response
<p>From Yatton Parish Council: Reduce the number of wards from four to two.</p>	<p>Draft recommendation 13: That no amendments be made to existing warding arrangements as part of this review where current arrangements support effective elections. Draft recommendation 13.9: That the number of wards in the parish of Yatton remain at four.</p>	<p>We wish to reiterate in the strongest terms that our current warding arrangement serves no purpose and causes unnecessary expense, and that we wish to change it. The (newly named) parish of Yatton and Claverham should have two wards: one covering Yatton and one covering Claverham. Please see the map below.</p>
<p>Submission 21.1 (online): Expand the boundary of Kingston Seymour to include nearby areas. The dozen or so households between our current boundary on Lampley Road and the B3133 are part of Yatton parish and yet always identify with Kingston Seymour as a community. They are always included in our events / village magazine and flyer distributions/village Facebook page etc.</p>	<p>Draft recommendation 20: That no amendments be made to the Kingston Seymour boundary.</p>	<p>We do not wish to have any part of our parish boundary altered.</p>
<p>Submission 40.1 (online): Parish boundary: Expand the boundary to include nearby areas. Expand south towards Congresbury or include Congresbury and Cleeve in Yatton Parish Council.</p>	<p>No draft recommendation.</p>	<p>We do not wish to merge our parish with any other parish, or to change its size, or to alter its boundary.</p>
<p>Submission 40.2 (online): Parish name: Include Claverham and possibly Congresbury. Due to housing development these villages have little separation. Parish boundary: Expand the boundary to include nearby areas. Expand it to Claverham and Congresbury. Council size: To be honest there should be less, even for an expanded council, it's unclear what they are actually doing.</p>	<p>No draft recommendation.</p>	<p>We do not wish to merge our parish with any other parish, or to change its size, or to alter its boundary. We agree that our council size could be reduced and therefore suggest that the number of councillors in Yatton and Claverham parish be reduced from the current 18 to 16. In terms of wards, this would be 12 for Yatton Ward and 4 for Claverham Ward.</p>

Submission	Draft Recommendation	Yatton Parish Council Response
Submission 40.3 (online): Creating new parishes: Perhaps when the Banwell bypass is completed and the houses built there should be a new one. Happy with current electoral arrangements.	No draft recommendation.	No comment.
Submission 40.4 (online): Parish boundary: Expand the boundary to include nearby areas (no recommendation provided).	No draft recommendation.	We do not wish to merge our parish with any other parish, or to change its size, or to alter its boundary.
Submission 40.5 (online): Happy with current electoral arrangements.	No draft recommendation.	No comment.
Submission 40.6 (online): Happy with current electoral arrangements.	No draft recommendation.	No comment.



Map of Proposed Ward Boundary Changes for Yatton and Claverham